



Franklin County
A Natural Setting for Opportunity

**AGENDA
FRANKLIN COUNTY BROADBAND AUTHORITY
MONDAY, APRIL 19, 2021
ROOM B75**

- 3:00 **Call to Order, Chairman Mitchell**
- 3:01 **Approval of Minutes**
 - March 16, 2021 Meeting
- 3:03 **Current Fixed Wireless Project Updates - Steven Sandy, Assistant County Administrator**
 - Blue Ridge Towers – Anthony Smith
 - Briscnet – John Manning
- 3:20 **Items for Authority Discussion/Action- Steven Sandy, Assistant County Administrator**
- 3:25 **Comments by Authority Members**
- 3:30 **Adjourn**

Board of Supervisors Work Session to Immediately Follow

**AGENDA
FRANKLIN COUNTY BOARD OF SUPERVISORS
MONDAY, APRIL 19, 2021
ROOM B75**

- 3:30 **Call to Order, Chairman Thompson**
- 3:31 **Discussion and Overview of Housing Initiatives/Studies**
 - HB854 Statewide Housing Study Overview
 - Regional Housing Study Presentation
 - Review of Ferrum Market Study
- 4:30 **Discussion of Franklin County Housing Summit and Upcoming Activities**
- 4:45 **Comments by Members**
- 5:00 **Adjourn**

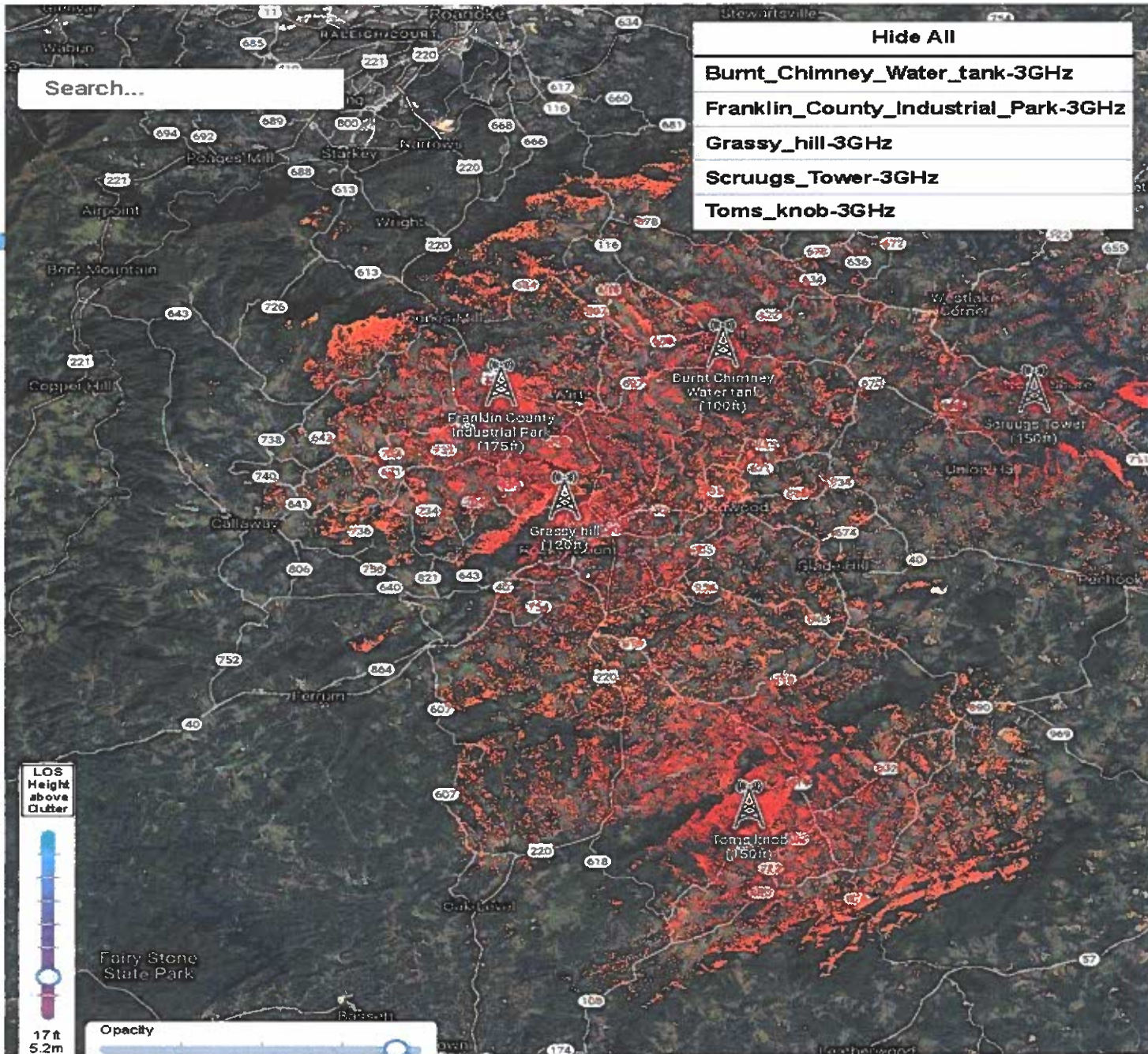
Recess until Board of Supervisors Regular Meeting on April 20, 2021 at 1:30 PM



Franklin County Broadband Progress Report

April 19, 2021





[Scruggs (155' rad)]

- Site All Completed (power, fiber, cabinet, antennas)
- BRISNET On Air and Scheduling customer installs
- First CBRS fixed wireless internet service to Franklin County



[Grassy Hill (120' rad)]

- Power On
- Antenna & Cabinet Installed
- Segra completing final Fiber connection
- Site will be On Air Soon



[Tom's Knob (120' rad)]

- Power On
- Antennas & Cabinet Installed
- 6.5 mile Fiber run nearly complete
- ETA On Air for BRISNET
Service <1 month



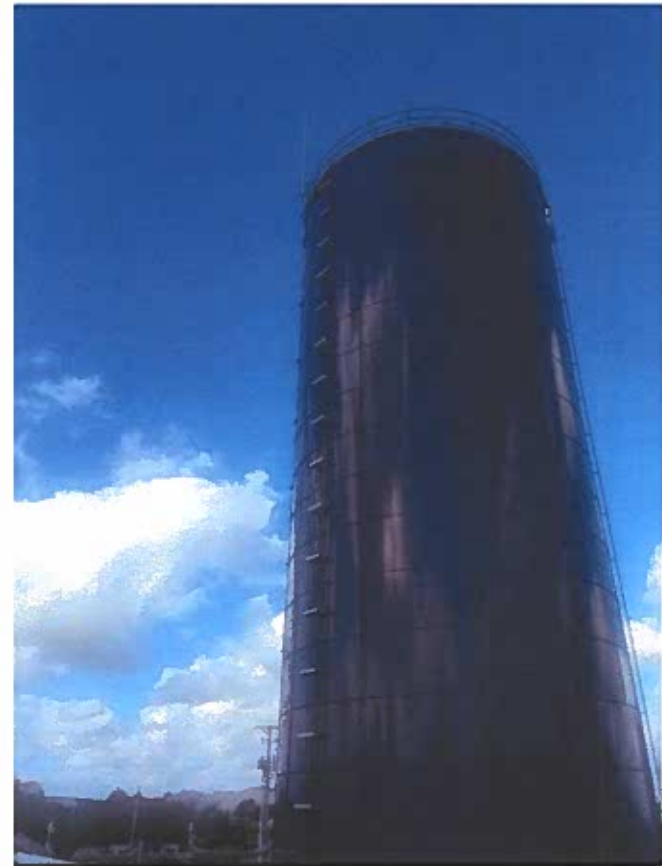
[Industrial Park/Summit View]

- Power On
- Fiber delivered to compound
- Lease review back with SBA
- Equipment waiting in warehouse
- ETA on air 45 days BRISNET Service



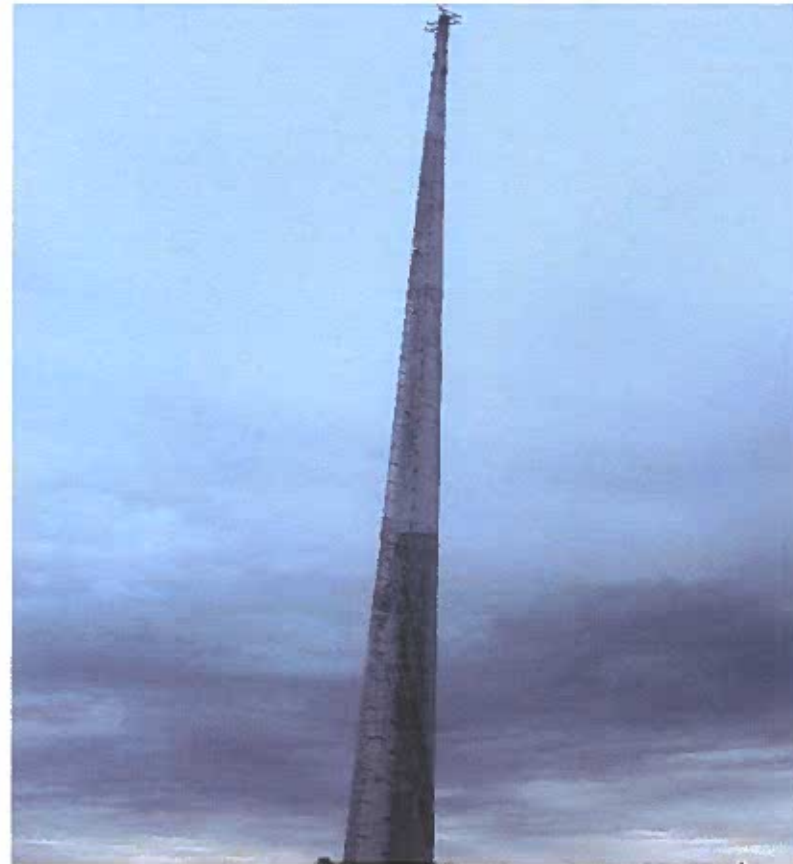
[Burnt Chimney (82' rad)]

- Power On
- Fiber completed and working
- Cabinet on site
- Antennas waiting at warehouse
- Waiting on lease execution
- Then install antennas and test
- ETA on air next month BRISNET
Service pending lease execution



[Snow Creek 195' monopole]

- Tower Complete
- Power (AEP working on turning power live currently)
- Fiber (aerial run) pole attachment with AEP in process
- Final punch-list items and site acceptance/turn over to Franklin County (next step)
- BRISNET to install antennas and Cabinet next month



[Sontag 150' monopole]

- Tower Complete
- Power delivery (AEP) underway
- Fiber Completed and tested
- Site walked for punch list items
- BRISNET to install equipment next



Glade Hill Elem School 80'

- Permit Issued
- Construction in progress
- Foundation Complete
- Tower Delivery and Stacking on weekend
- Power (AEP) delivery job released
- Fiber Completion 1 week
- Tower will be complete by 4/30
- Ready for BRISNET installs next month and on air testing



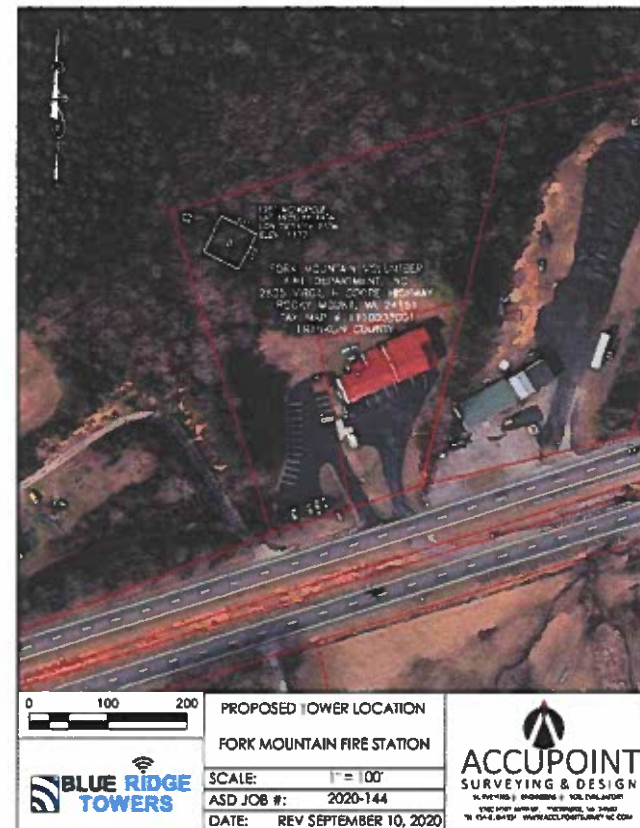
[Henry VFD 195' monopole]

- Permit issued
- Construction started today
- Power design completed
- Microwave equipment ordered
- Construction complete 30 days
- BRISNET to install equipment next (after tower completion)



Fork Mountain VFD 195'

- Permit Issued
- Fiber delivered to VFD already, last ¼ mile fiber delivery once tower construction underway
- Power ordered and designed
- Construction scheduled next week
- Microwave ordered (for path to Henry)
- Tower complete ETA 40 days



Callaway Elem School 195'

- Applied for Building Permit
- Fiber design complete & accepted
- Power ordered, designed, AEP waiting on release
- Construction to start May 1
- 60 days to tower completion



Westlake 175' Monopine

- Working with NPS and FCC to resolve NEPA/SHPO compliance
- Zoning Hearing with county on hold till then
- Power and Fiber ordered but held
- Site Approval ETA June/July
- Site On air ETA Sept/2021



[Sites On Air NOW]

- Scruggs



[Sites On Air Next]

- Tom's Knob
- Grassy Hill
- Snow Creek
- Glade Hill Elem
- Sontag
- Burnt Chimney
- Industrial Park



[Rest of the Sites to follow]

- Henry
- Fork Mtn
- Callaway
- Westlake

