

The background of the slide features a series of concentric, overlapping circles and arcs in a light gray color. Some of these lines are solid, while others are dashed, creating a dynamic, abstract pattern that resembles ripples or a stylized globe.

# Parks and Recreation

Board of Supervisors – Budget Planning Session - 1/3/21

# Elbert Powell Ball Fields Dedication



# River of Lights



# Aging Services Outreach



Nearly full  
return to  
athletics



# SML Shoreline Stabilization



# Summit View Trail



# Waid Disc Golf Course

FRANKLIN COUNTY  
PARKS & RECREATION

# DISC GOLF

## BEGINNER COURSE



## GRAND OPENING

NOVEMBER 13  
10:00 AM  
WAID PARK  
701 WAID PARK RD  
ROCKY MOUNT VA 24151



ALL BEGINNERS GET A  
FREE CUSTOM PRINT DISC

WORK ON YOUR SHORT GAME  
9 HOLE COURSE  
QUICK PLAY ROUNDS

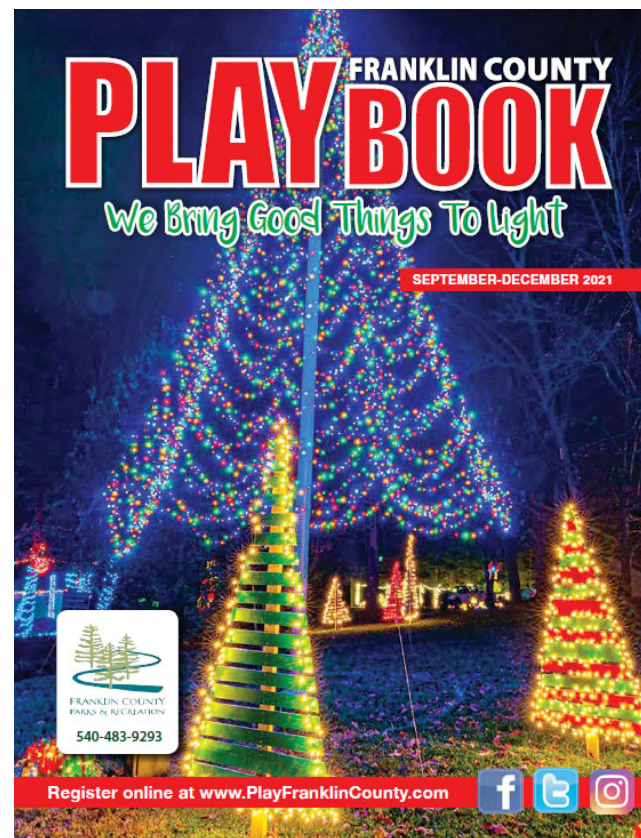
# Land of Lights





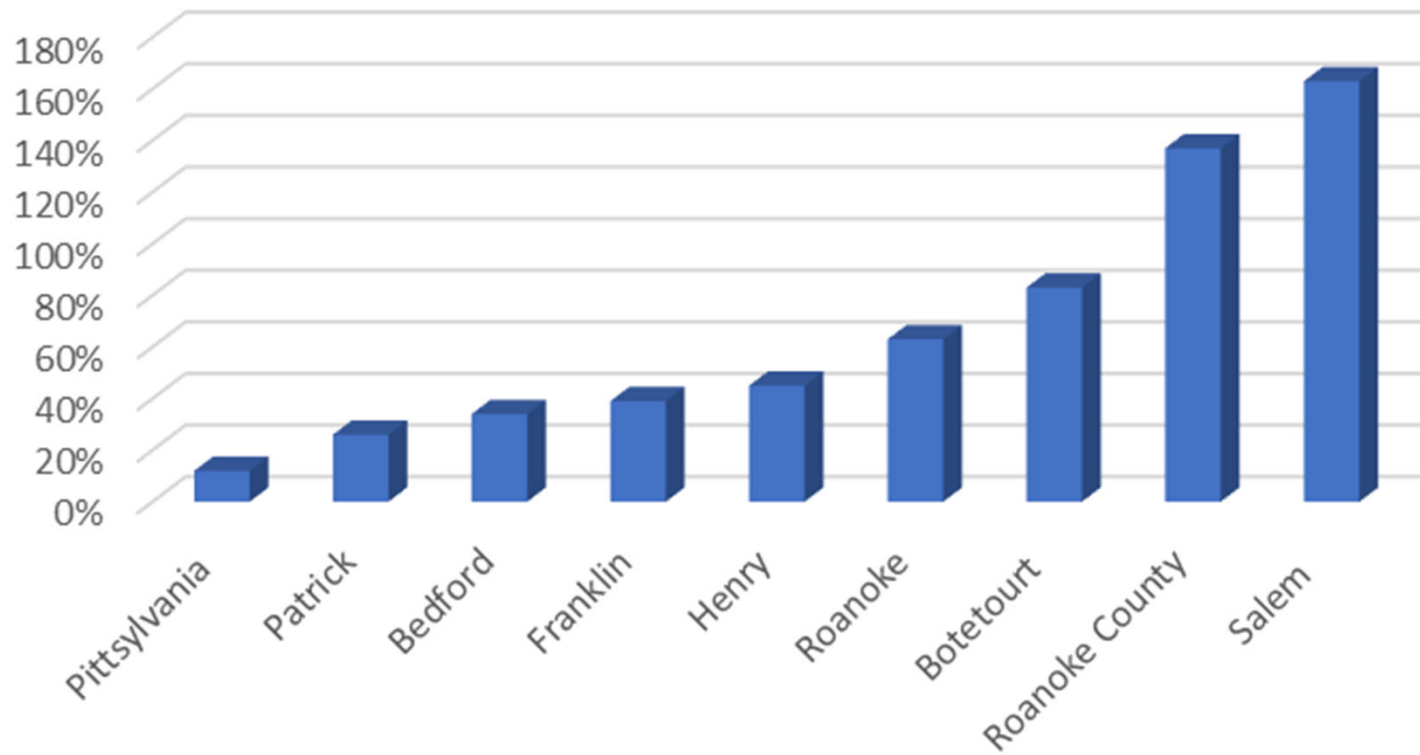
12 page / approx. 40 activities

**Budget 7 x FCPR**

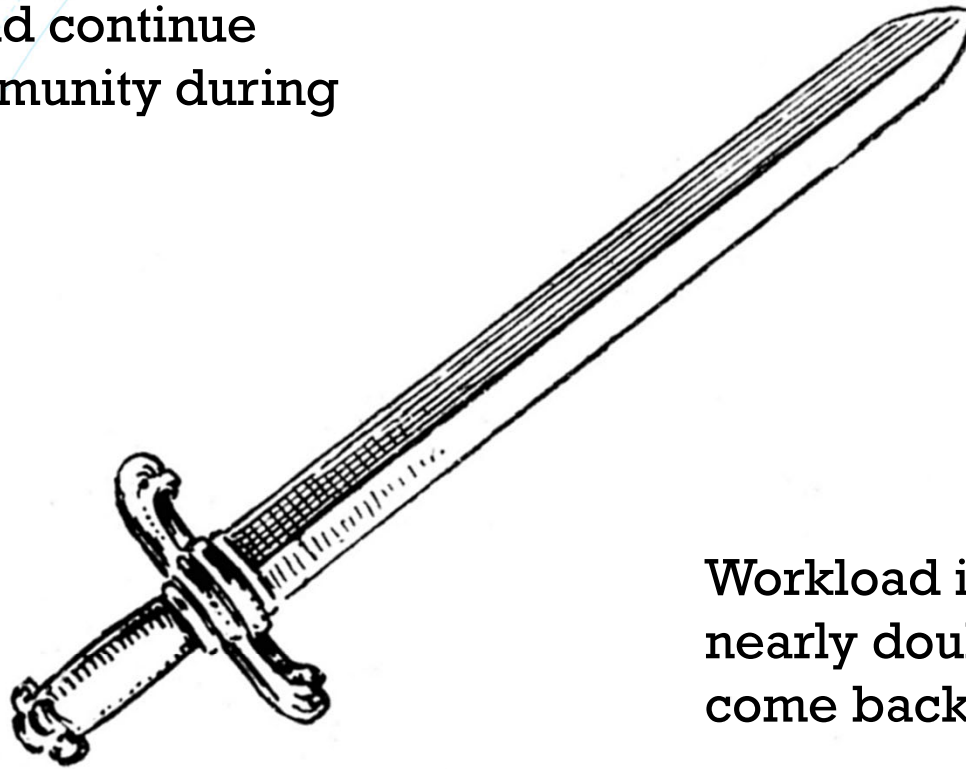


20 pages / 77 activities

## Percentage of Average State Funding



Able to adapt and continue serving the community during dynamic times.



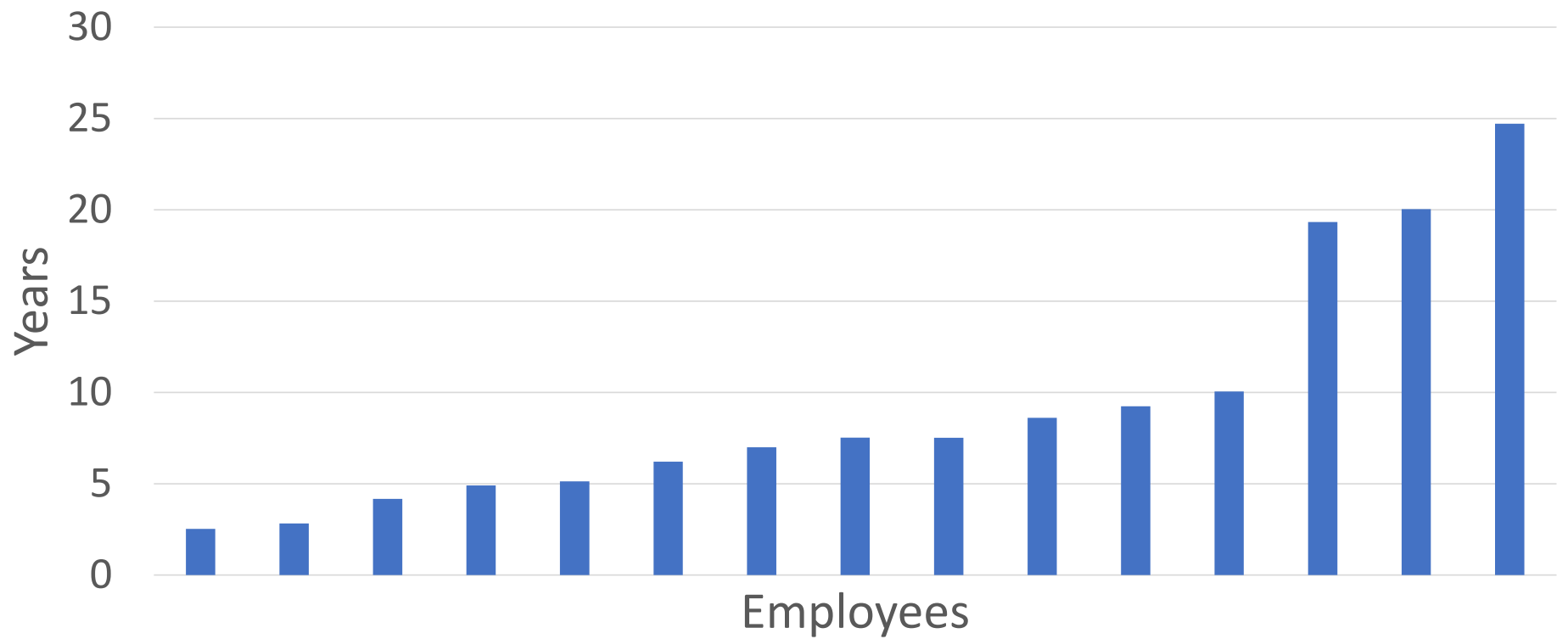
Workload in many areas has nearly doubled as activities come back online

The background of the slide features several sets of thin, curved lines in light gray and blue, creating a sense of motion and depth. These lines are primarily located on the left and right sides of the slide, framing the central content.

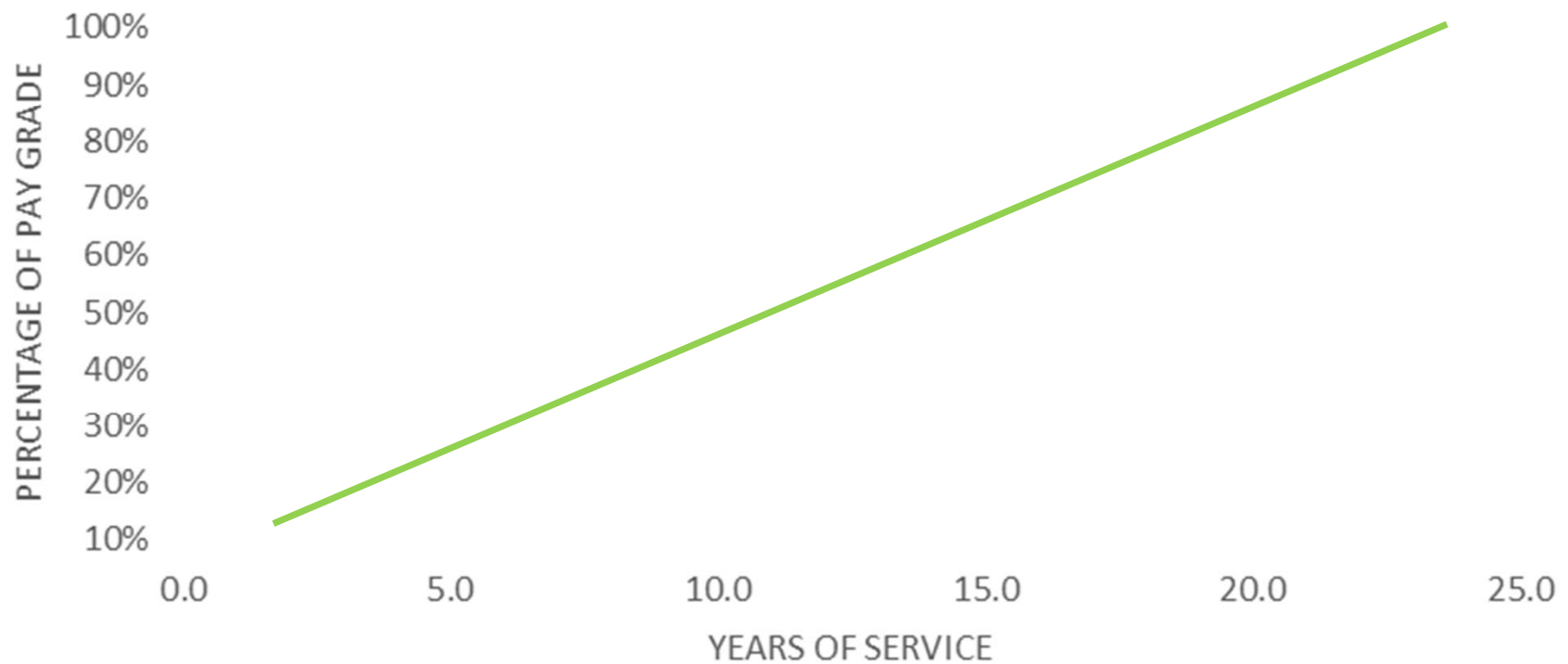
## Quick Facts

- The Franklin County Parks and Recreation Department strives to provide services that improve our resident's **quality of life** and **attracts new businesses, residents and visitors.**
- 16 FT Staff (2 vacancies)
- 8 Regular PT Staff
- 29 Seasonal PT Staff
- 85 Contracted Staff
- Most efficient department in the region

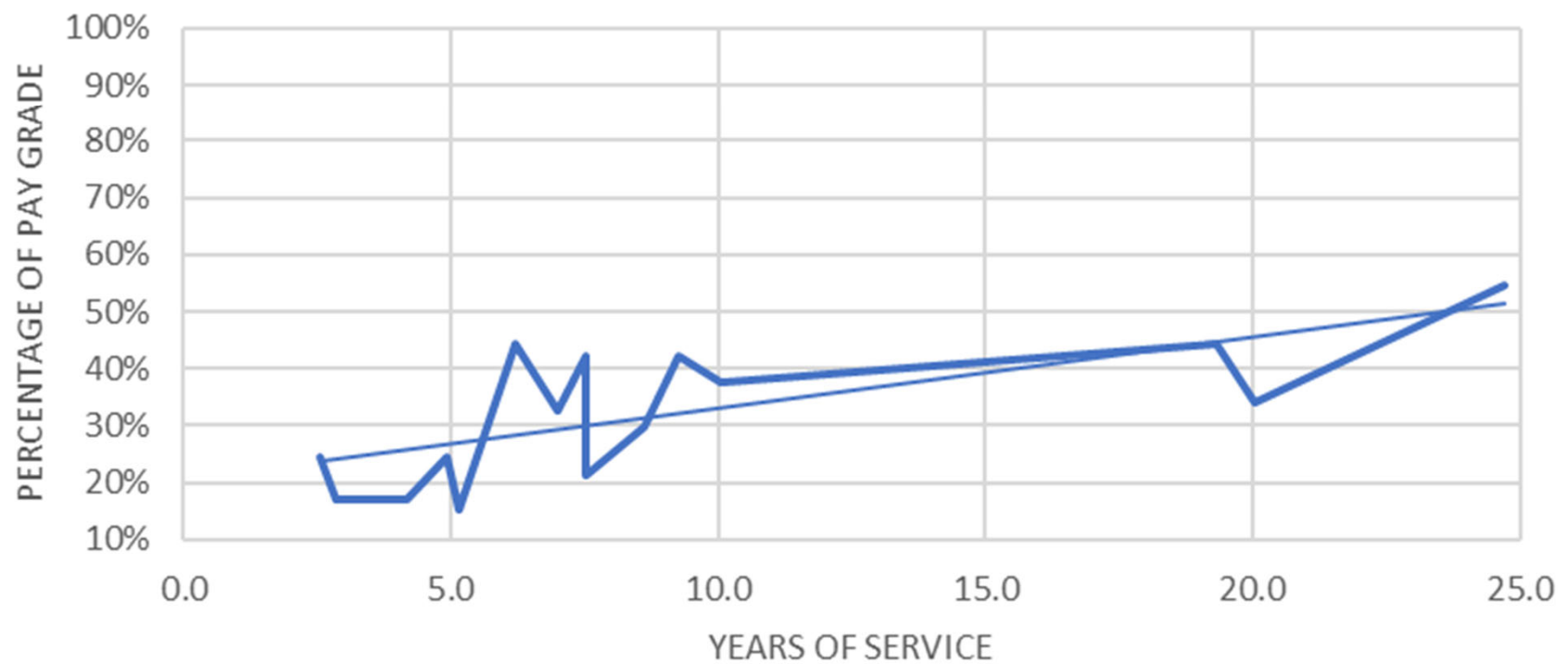
## Parks and Recreation Employees and Years of Service



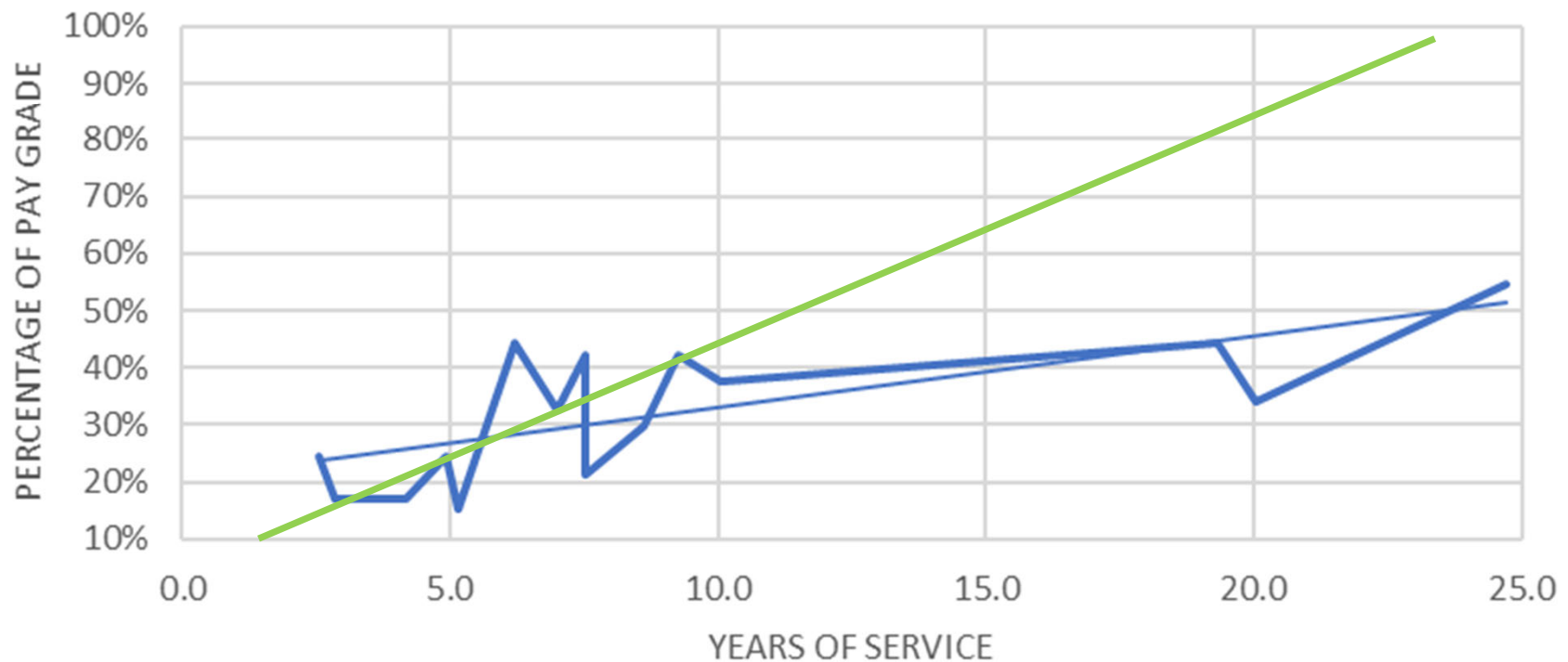
## YEARS OF SERVICE AND PERCENTAGE OF PAY GRADE



## YEARS OF SERVICE AND PERCENTAGE OF PAY GRADE



## YEARS OF SERVICE AND PERCENTAGE OF PAY GRADE



**Will take 48 years to reach top of pay grade**

**Roanoke**  
**unanimous**  
**raising**  
**\$15/hour**  
**employ**  
**The change**  
**December**



## Ply Gem Windows & Doors Careers - Rocky Mount, VA

December 20, 2021 at 8:44 AM · 🌐

Don't miss your window of opportunity!! Our base rate has just increased to \$16 hour! Base \$16-\$18.50 starting out! Hurry while these positions are still available. Ply Gem Windows and Doors. \$1000 sign on Bonus. Benefits offered day one of Employment! This week Dec. 20-22 Open Interview 8am-5pm Positions offered on the spot! Questions call 540-484-6311  
433 N. main St. Rocky Mount VA 24151



Like

Comment

Share

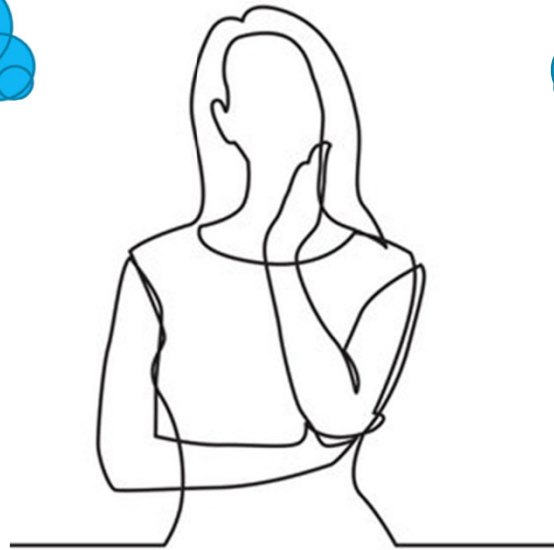
8 Shares

**Game Official for Franklin County**

**Average of \$16.30 per game**

**Game Official for Surrounding Locality**

**Average of \$27.39 per game (68% more)**



**Site Supervisor for Franklin County**

**\$11.00 per hour**

*Public Facing / Representing FC*

**Big Box Store Sales Associate**

**\$13 - \$14 per hour**



**Maintenance Worker for Franklin County**

**\$12.33 per hour**

**Entry Level Factory Worker**

**\$15 to \$22+ per hour**

**Plus a signing bonus**



signing bonuses

peers working from home

COVID

feeling of not being valued

compression

higher health care

increased poor behavior

inflation

retiring staff

burned out “essential” workers

more duties

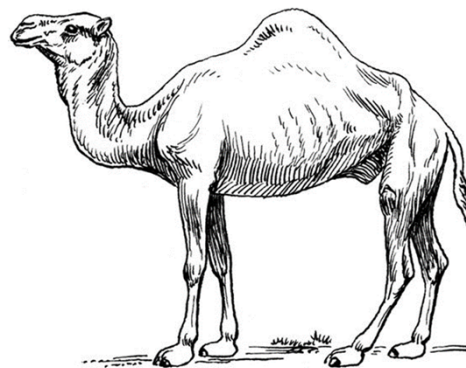
increased traffic

fewer / no trustees

fewer / no seasonal staff

better hours advertised

higher pay advertised



## Example of Salary Increase


**\$12.33 per hour** (\$24,053 per year) to  
**\$16.00 per hour** (\$31,200 per year)  
will only cost **\$7,147**

- Better applicant pool
- Less turn over
- Less risk to the County
- Increased morale
- Higher productivity
- Best represent the Board



## Operational Budget Requests

### **Emphasis on Compensation / Inflation**

- FT Salary Adjustment: TBD
  - PT Wages \$14 (\$15 for lifeguards) \$56,593
  - Contracted Employees Wages \$24,491
  - Professional Development \$5,000
  - Uniforms \$3,000
  - Cell phones \$3,840
  - Fuel \$4,000
  - Playbook \$6,000
  - Land of Lights \$17,500
  - Aging Services \$4,000
  - Outdoor Recreation \$7,000
- 

# Capital Budget Requests

- **Capital Maintenance \$130,000**
  - Rec Park Signage, Waid Park Iron Bridge, Rocky Mount Skatepark, and Rec Park stage.
- **SML Beach Renovation \$100,000**
- **Trail / Blueway Development \$50,000**
- **Athletic Field Lighting \$110,000**
- **Park Improvements \$40,000**
  - Jamison Mill Campground and Snow Creek Master Plan
- **Playgrounds: \$50,000**
- **Smith Farm Development \$100,000**
- **Vehicle Replacement \$40,000**
- **Equipment Replacement \$12,000**

Questions? ▶